

Note that this data sheet is not lot-specific. Please consult the vial label and the certificate of analysis for information on specific lots.

**rb-anti-h-MMP 14 (IgG), polyclonal  
(anti-Membrane-type 1 Matrix Metalloproteinase (MT1-MMP))**

Catalogue Number: 31 101 004

Package Size: 100 µl / 100 µg

### 1. Description

Rabbit polyclonal antibody against human MMP 14 (MT1-MMP).

The polyclonal antibody was raised against a peptide derived from the hinge region between catalytic domain and hemopexin domain of MT1-MMP. For immunization a peptide-KLH-conjugate was used, and IgG fraction were purified by affinity chromatography on a peptide-BSA-matrix.

### 2. Specificity

The antibody is specific for MT1-MMP. It does not react to a significant extent with MT2-MMP.

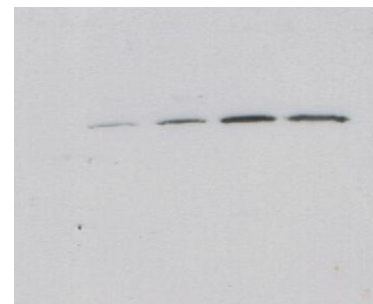
### 3. Package

Purified antibody in 100 µl phosphate buffered saline (20 mM Na-phosphate, pH 7.5, 150 mM NaCl) containing 0.01 % thimerosal.

### 4. Applications

- Western-Blotting with ECL-Detection; an antibody dilution of 1:2000 is recommended to detect 40 ng of MT1-MMP
- ELISA

20 40 60 100 200 ng MMP14



**Western Blot with anti-MMP14**

### 5. Storage

The antibody is stable for several months when stored at 2-8°C.

### 6. Additional Information

Antibodies should be titrated for optimal results in individual systems.